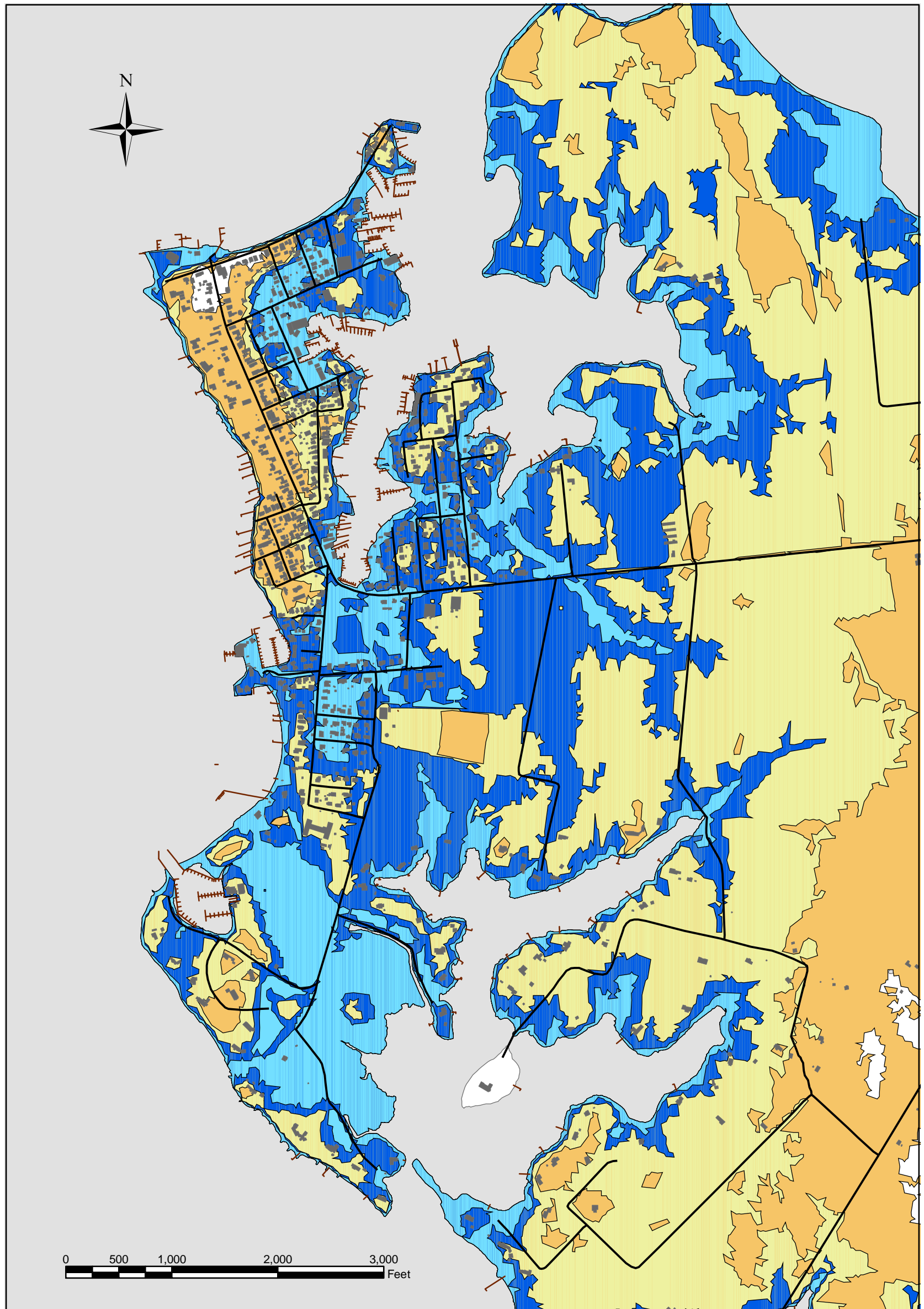


TOWN OF OXFORD HURRICANE STORM SURGE MAP

Prepared by
Talbot County
Department of Public Works
Geographic Information Systems
August 12, 2004



Areas of Possible Flooding

- Category 1 Hurricanes
- Category 2 Hurricanes
- Category 3 Hurricanes
- Category 4 Hurricanes
- Water

SLOSH MODEL SURGE VALUES (regional elevation)

Cat 1	4.2
Cat 2	5.9
Cat 3	8.0
Cat 4	10.2

This map was derived from data developed and produced by the Army Corps of Engineers, Philadelphia District. It is made available to Delmarva Peninsula state and local government emergency management and other interested agencies as a preview of inundation areas that will be used in hurricane evacuation traffic modeling. Areas of possible flooding are based on the overlay of maximum SLOSH Model storm surges on available ground elevation data.

This map has been developed as a planning tool for the Talbot County Emergency Management Agency and should not be generally distributed.